



01.08.2020

General Brass Fittings



kalde[®]

First Choice

Why Kalde?

Kalde produces high quality products, designs and develops integrated solutions for customers worldwide.

It is among the leading companies in production of pipes and fittings with its knowledge and expertise of more than 40 years.

The headquarters of the company is located in Istanbul where the continents of Asia and Europe meet.

Our strategical location at the junction of Europe, Asia and Africa together with a reliable supply chain give us unique advantages in providing our business partners and customers with high quality service as well as the competition in the global markets. Currently, our products are exported to more than 40 countries worldwide including Germany, Hungary, Romania, Austria, Greece, Bulgaria, Russia, Ukraine, Egypt, Syria, Lebanon, etc.

Kalde has product design, development and quality control facilities in 300.000 m².

Kalde produces a wide range of products including PP-R pipes, PP-R fittings, PP-R and brass valves, Al-pex & PE-RT pipes, screw fittings, press fittings, PE-X pipes and collectors. Kalde has internationally accredited certificates from respected organisations such as DVGW SKZ (Germany), CSTB (France) and AENOR (Spain). Furthermore, our management system has been certified by ISO. We are proud of our high quality products and experiences...

Our vision is providing our customers with an increasingly wide portfolio of high quality products and solutions with continuous research and development.

Our goal is to develop long term partnerships with our customers and suppliers.

We create integrated solutions by team work as well as collaboration with our customers and partners.

Having market-focused teams of around 1500 professionals supported by a strong management, we offer our business partners and customers worldwide with value-adding solutions.

As result of these reasons, **kalde** Kalde is the "First Choice" of the users worldwide

Kalde Value Commitment.

Kalde was established by four young engineers dedicated to provide customers with the best service in 1977.

This spirit is still alive and is the essence of our mission statement.

The Success of Kalde is the Result of Various Factors.

- **High quality** products.
- Utilization of best **practices**.
- Products meeting your **unique** requirements.
- **Proven** products.
- **Total** customer satisfaction.
- **Long term** relationships with each customer.
- A **dedicated** team of around 1500 professionals.

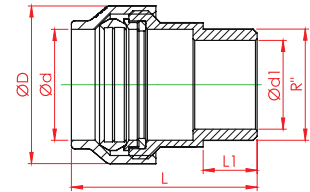
Contents

Normal Type Gas Ball Valve	6
Locking Type Gas Ball Valve	7
Water Ball Valve	10
Radiator Valves	19
Stop Valve	22
Metal (Brass) Filter	24
Straight Check - Valve	26
Check - Valve	27
Pressure Reducing Valve	28
Pressure Valve with Tail	29
Pressure Reducing Valve Assembly and Operating Instructions	30

General Brass Fittings

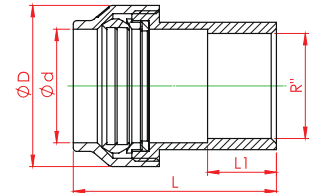
Male Securing

Code	Size	d	d1	D	R"	L1	L	Pcs.
3451-sec-160000	ø16	17	15	29	1/2"	12	40	250
3451-sec-200000	ø20	21	15	33	1/2"	12	43	200
3451-sec-250000	ø25	26	20	39	3/4"	13	46	100
3451-sec-320000	ø32	33	26,5	47	1"	14	49	60
3451-sec-400000	ø40	41,5	34,5	57	1 1/4"	16	59	35



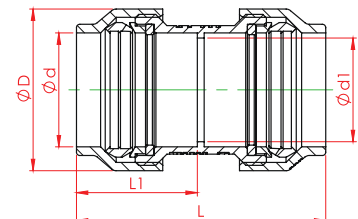
Female Securing

Code	Size	d	d1	D	R"	L1	L	Pcs.
3451-sef-160000	ø16	17	15	29	1/2"	12	40	250
3451-sef-200000	ø20	21	15	33	1/2"	12	43,5	200
3451-sef-250000	ø25	26	20	39	3/4"	13	46	100
3451-sef-320000	ø32	33	26,5	47	1"	15	49	60
3451-sef-400000	ø40	41,5	34,5	57	1 1/4"	17	62	35



Securing

Code	Size	d	d1	D	R"	L1	L	Pcs.
3451-see-160000	ø16	17	15	29	1/2"	26	53	150
3451-see-200000	ø20	21	18	33	1/2"	29	59	100
3451-see-250000	ø25	26	22	39	3/4"	32	65	70
3451-see-320000	ø32	33	31	47	1"	33	68	45
3451-see-400000	ø40	41,5	38	57	1 1/4"	40	82	20



General Brass Fittings

Brass Fittings

Part Name	Material
Body	CW617N
Screw Of The Fittings	EN ISO 228-1

Brass fittings, widely used in water distribution systems as industrial and domestic heating systems, hydraulic, pneumatic and agricultural plants. Temperature range : -10° +100° C and working pressure 25 - 40 bar.

Brass Fittings Assembly And Operating Instructions

- 1- Be aware to use excessive teflon and linen at the joints, causes to cracks on the body.
- 2- The maximum working pressure of Kalde brass fittings is 25 - 40 bar and the maximum operating temperature is +100 °C. Minimum operating temperature is -10°C . Do not use the brass fittings at higher pressures and outside of this temperature range.
- 3- In installation applications: existing local installation regulations and codes of practice should observed and be taken into consideration.

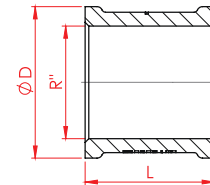
After the installation was completed, check for water leaks at the joints. Do not use the fittings if it is leaking.

Size	Nominal Pressure (Bar)	Test Pressure (Bar)	Maximum Operating Pressure, Bar Under Temperature, (°C)			
			100°C	120°C	150°C	180°C
1/2"	40	60	40	36	30	24
3/4"	40	60	40	36	30	24
1"	40	60	40	36	30	24
1 1/4"	25	38	25	21,8	16,5	11,3
1 1/2"	25	38	25	21,8	16,5	11,3
2"	25	38	25	21,8	16,5	11,3

General Brass Fittings

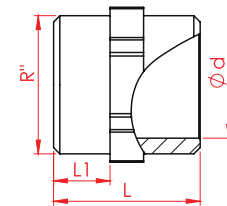
Coupling

Code	R"	D	L	Pcs.
3811-muf-0b0000	1/2"	28,5	29	200
3811-muf-0c0000	3/4"	35	31	150
3811-muf-100000	1"	41	35	80
3811-muf-1a0000	1 1/4"	51,5	40	45
3811-muf-1b0000	1 1/2"	58	42	36
3811-muf-200001	2"	69	48	18



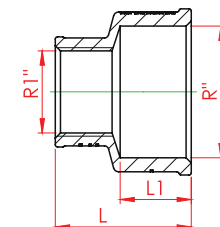
Nipple

Code	R"	d	L1	L	Pcs.
3811-npl-0d0000	3/8"	12	9	23	500
3811-npl-0b0000	1/2"	14,5	10,5	28	300
3811-npl-0c0000	3/4"	20	12	31	200
3811-npl-100000	1"	25	13,5	35	100
3811-npl-1a0000	1 1/4"	34	16	40,5	60
3811-npl-1b0000	1 1/2"	40	17	43	36
3811-npl-200000	2"	50	17	44	25



Reducing Coupling

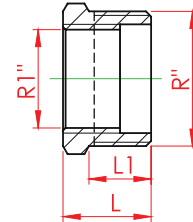
Code	R1"	R"	L1	L	Pcs.
3811-mur-0b0d00	3/8"	1/2"	14	27,5	200
3811-mur-0c0b00	1/2"	3/4"	13	27,5	150
3811-mur-100b00	1/2"	1"	15	31,5	100
3811-mur-100c00	3/4"	1"	15	32	100
3811-mur-1a0b00	1/2"	1 1/4"	15	32	80
3811-mur-1a0c00	3/4"	1 1/4"	15	32	80
3811-mur-1a1000	1"	1 1/4"	15	33	80
3811-mur-1b1000	1"	1 1/2"	19	37,5	50
3811-mur-1b1a00	1 1/4"	1 1/2"	17,5	36,5	45
3811-mur-201000	1"	2"	17,5	36	40
3811-mur-201a00	1 1/4"	2"	18,5	40,5	30
3811-mur-201b00	1 1/2"	2"	18,5	40,5	30



General Brass Fittings

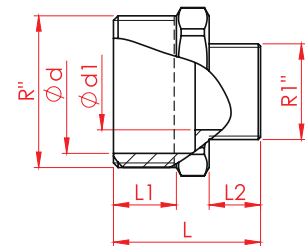
Reducing

Code	R1"	R"	L1	L	Pcs.
3811-rdc-0a0b00	1/4"	1/2"	15	18	400
3811-rdc-0d0b00	3/8"	1/2"	15	18	400
3811-rdc-0b0c00	1/2"	3/4"	15	18	300
3811-rdc-0b1000	1/2"	1"	21	25	150
3811-rdc-0c1000	3/4"	1"	21	25	150
3811-rdc-0b1a00	1/2"	1 1/4"	16	24,5	70
3811-rdc-1a0c00	3/4"	1 1/4"	16	24,5	80
3811-rdc-1a1000	1"	1 1/4"	16	24,5	100
3811-rdc-0b1b00	1/2"	1 1/2"	15	24,5	70
3811-rdc-0c1b00	3/4"	1 1/2"	15	24,5	80
3811-rdc-1b1000	1"	1 1/2"	15	24,5	65
3811-rdc-1b1a00	1 1/4"	1 1/2"	15	24,5	65
3811-rdc-200b00	1/2"	2"	16	26	35
3811-rdc-200c00	3/4"	2"	16	26	35
3811-rdc-201000	1"	2"	16	26	30
3811-rdc-1a2000	1 1/4"	2"	16	26	40
3811-rdc-1b2000	1 1/2"	2"	16	26	40



Reducing Nipple

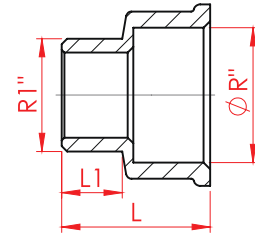
Code	d1	d	R1"	R"	L2	L1	L	Pcs.
3811-rdn-0b0d00	12	16,5	3/8"	1/2"	9	11	26	300
3811-rdn-0c0d00	12	20,5	3/8"	3/4"	8,5	12	27,5	300
3811-rdn-0c0b00	16,5	21	1/2"	3/4"	11	12	29	200
3811-rdn-100b00	16,5	26,5	1/2"	1"	11	13,5	31,5	120
3811-rdn-100c00	21,5	26,5	3/4"	1"	12	14	32,5	100
3811-rdn-1a0b00	16,5	34,5	1/2"	1 1/4"	11	16	35	70
3811-rdn-1a0c00	21,5	34,5	3/4"	1 1/4"	13	16	36	70
3811-rdn-1a1000	26,5	34,5	1"	1 1/4"	13,5	16	37,5	60
3811-rdn-0b1b00	16,5	40,5	1/2"	1 1/2"	11	16,5	36	60
3811-rdn-0c1b00	21,5	40,5	3/4"	1 1/2"	12	16,5	39	50
3811-rdn-1b1000	26,5	40,5	1"	1 1/2"	13,5	16,5	38,5	60
3811-rdn-1b1a00	35	40,5	1 1/4"	1 1/2"	16,5	16,5	41,5	50
3811-rdn-200b00	16,5	50,5	1/2"	2"	11	17	39	40
3811-rdn-200c00	21,5	50,5	3/4"	2"	12	17	43	40
3811-rdn-201000	26,5	50,5	1"	2"	13,5	17	41,5	40
3811-rdn-201a00	35	50,5	1 1/4"	2"	14	17	42	32
3811-rdn-201b00	40,5	50,5	1 1/2"	2"	16,5	17	44,5	30



General Brass Fittings

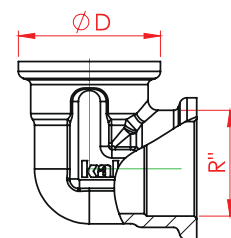
Invert Reducing

Code	R1"	R"	L1	L	Pcs.
3811-ird-0c0b00	1/2"	3/4"	11	27	200
3811-ird-100b00	1/2"	1"	11	30,5	100
3811-ird-100c00	3/4"	1"	13	32,5	100
3811-ird-1a0c00	3/4"	1 1/4"	13	32	90
3811-ird-1a1000	1"	1 1/4"	15	33	80
3811-ird-1b1000	1"	1 1/2"	15	35	60
3811-ird-0b0d00	3/8"	1/2"	10	27	250
3811-ird-1a0b00	1/2"	1 1/4"	11	32	75
3811-ird-1b0b00	1/2"	1 1/2"	11	32	80
3811-ird-1b0c00	3/4"	1 1/2"	13	34	60
3811-ird-1b1a00	1 1/4"	1 1/2"	16	38	60
3811-ird-201000	1"	2"	15	39	40
3811-ird-201a00	1 1/4"	2"	16	41	30
3811-ird-201b00	1 1/2"	2"	18	42	25



Elbow Female / Female

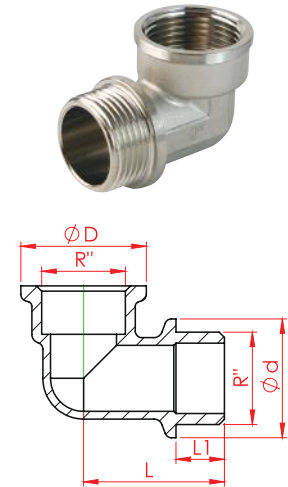
Code	R"	D	Pcs.
3811-efo-0b0000	1/2"	28,5	125
3811-efo-0c0000	3/4"	35	65
3811-efo-100000	1"	41	35
3811-efo-1a0000	1 1/4"	51,5	20
3811-efo-1b0000	1 1/2"	55	20
3811-efo-200000	2"	68	12



General Brass Fittings

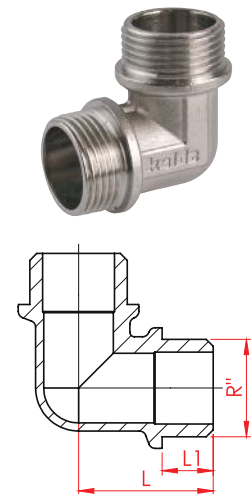
Elbow Female / Male

Code	R"	d	D	L1	L	Pcs.
3811-emo-0b0000	1/2"	27	28,5	11	32	120
3811-emo-0c0000	3/4"	31	35	13	38	80
3811-emo-100000	1"	39	41	15	45	40
3811-emo-1a0000	1 1/4"	50,5	51,5	16	53	20
3811-emo-1b0000	1 1/2"	56	58	19	59	15
3811-emo-200000	2"	68	69	22	73	10



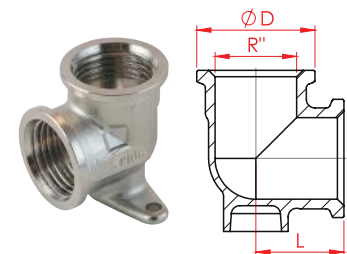
Elbow Male / Male

Code	R"	L1	L	Pcs.
3811-emm-0b0000	1/2"	11	29	100
3811-emm-0c0000	3/4"	13	34,5	80
3811-emm-100000	1"	15	41	45



Wall Plate Elbow

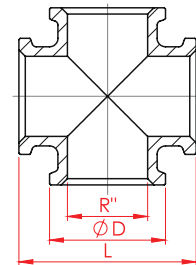
Code	R"	D	L	Pcs.
3811-fle-0b0000	1/2"	28,5	20,5	120
3811-fle-0c0000	3/4"	35	25,5	50



General Brass Fittings

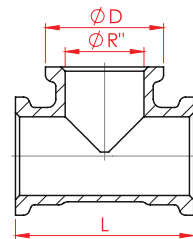
Cross

Code	R"	D	L	Pcs.
3811-crs-0b0000	1/2"	28,5	43	80
3811-crs-0c0000	3/4"	35	51	50
3811-crs-100000	1"	41	61	25



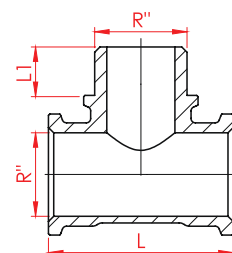
Tee Female / Female / Female

Code	R"	D	L	Pcs.
3811-tfo-0b0000	1/2"	28,5	43	100
3811-tfo-0c0000	3/4"	35	51	50
3811-tfo-100000	1"	41	61	25
3811-tfo-1a0000	1 1/4"	51,5	72	18
3811-tfo-1b0000	1 1/2"	57,5	81	16
3811-tfo-200000	2"	68,5	96	8



Tee Female / Male / Female

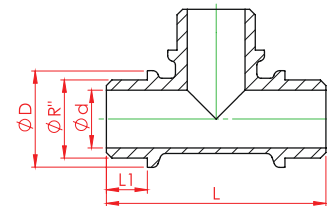
Code	R"	L1	L	Pcs.
3811-tfm-0b0000	1/2"	11	42	100
3811-tfm-0c0000	3/4"	12,5	52	60
3811-tfm-100000	1"	15	61	30



General Brass Fittings

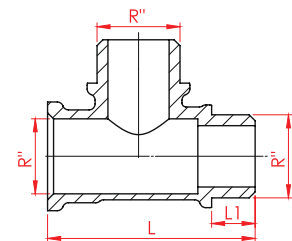
Tee Male / Male / Male

Code	R"	d	D	L1	L	Pcs.
3811-tmo-0b0000	1/2"	16	27	11	59	80
3811-tmo-0c0000	3/4"	21	31	12,5	67	60
3811-tmo-100000	1"	26	39,5	15	82	30



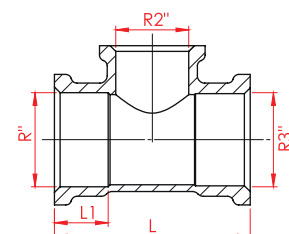
Tee Male / Male / Female

Code	R"	L1	L	Pcs.
3811-tdm-0b0000	1/2"	11	52,5	80



Inegal Tee

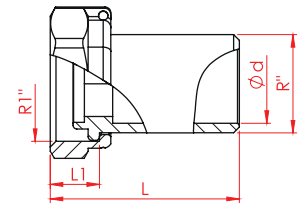
Code	R"	R2"	R3"	L1	L	Pcs.
3811-tio-0c0b0c	3/4"	1/2"	3/4"	14	51	60
3811-tio-100b10	1"	1/2"	1"	14	59	35
3811-tio-100c10	1"	3/4"	1"	14	59	35



General Brass Fittings

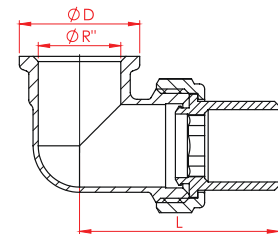
Water Meter Union

Code	R"	R1"	d	L1	L	Pcs.
3811-wmt-0c1000	3/4"	1"	21	13	50	80



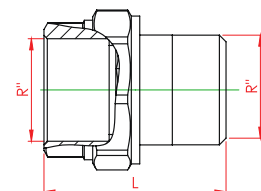
Union-Elbow

Code	R"	D	L	Pcs.
3811-tue-0b0000	1/2"	28,5	57,87	80
3811-tue-0c0000	3/4"	35	58	50
3811-tue-100000	1"	41	68	30
3811-tue-1a0000	1 1/4"	51,5	76,2	15



Union-Straight

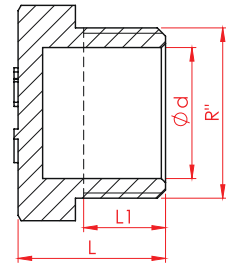
Code	R"	L	Pcs.
3811-tun-0b0000	1/2"	44,5	150
3811-tun-0c0000	3/4"	49,5	80
3811-tun-100000	1"	54	40
3811-tun-1a0000	1 1/4"	62	25
3811-tun-160000	1 1/2"	62,5	20
3811-tun-200000	2"	66,5	16



General Brass Fittings

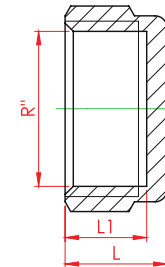
Male Stopend

Code	R"	d	L1	L	Pcs.
3811-stm-0b0000	1/2"	16	10	18	400
3811-stm-0c0000	3/4"	21	12	17	250
3811-stm-100000	1"	25,5	14	20	170
3811-stm-1a0000	1 1/4"	33	16	23	80
3811-stm-1b0000	1 1/2"	41	16,5	24,5	75
3811-stm-200000	2"	52	17	25	30



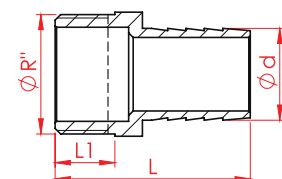
Female Stopend

Code	R"	L1	L	Pcs.
3811-stf-0d0000	3/8"	9	11	1050
3811-stf-0b0000	1/2"	10	12,5	500
3811-stf-0c0000	3/4"	11	13	250
3811-stf-100000	1"	12,5	15	150
3811-stf-1a0000	1 1/4"	14,5	17	120
3811-stf-1b0000	1 1/2"	15	18	90
3811-stf-200000	2"	15,5	18	50



Hose Connection - Male

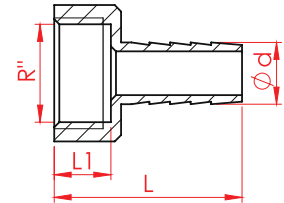
Code	R"	d	L1	L	Pcs.
3811-uch-0b0010	1/2"	10			250
3811-uch-0b0012	1/2"	12	11	36.5	300
3811-uch-0b0014	1/2"	14	11	36.5	250
3811-uch-0b0016	1/2"	16	11	36.5	250
3811-uch-0b0018	1/2"	18	11	36.5	250
3811-uch-0b0020	1/2"	20	11	36.5	200
3811-uch-0c0020	3/4"	20	11	40	150
3811-uch-100025	1"	25	13	46.5	80



General Brass Fittings

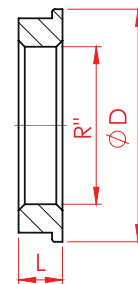
Hose Connection - Female

Code	R"	d	L1	L	Pcs.
3811-ucf-0b0010	1/2"	10	11	36,5	250
3811-ucf-0b0012	1/2"	12	11	36,5	250
3811-ucf-0b0014	1/2"	14	11	36,5	250
3811-ucf-0b0016	1/2"	16	11	36,5	200
3811-ucf-0b0018	1/2"	18	11	36,5	150
3811-ucf-0b0020	1/2"	20	11	36,5	150



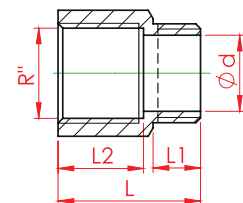
Nut with Flange

Code	R"	D	L	Pcs.
3811-fsm-0b0000	1/2"	31	7,5	500
3811-fsm-0c0000	3/4"	38	8,5	400
3811-fsm-100000	1"	45	8,5	250
3811-fsm-1a0000	1 1/4"	52,5	10	150
3811-fsm-1b0000	1 1/2"	59,5	12	100
3811-fsm-200000	2"	72,5	13	60



Plated Connection to Wrench

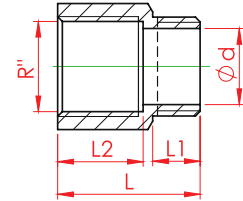
Code	R"	d	L2	L1	L	Pcs.
3811-ext-0b0010	1/2"	16	8	10	20	300
3811-ext-0b0015	1/2"	16	13	15	25	250
3811-ext-0b0020	1/2"	16	18	20	30	200
3811-ext-0b0025	1/2"	16	23	25	35	150
3811-ext-0b0030	1/2"	16	28	30	40	150
3811-ext-0b0040	1/2"	16	38	40	50	120
3811-ext-0b0050	1/2"	16	48	50	60	100



General Brass Fittings

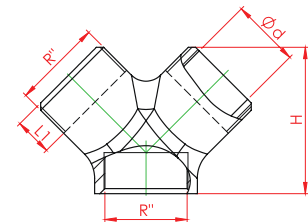
Plated Connection - Chrome

Code	R"	d	L2	L1	L	Pcs.
3811-nex-0b0010	1/2"	16	8	10	20	300
3811-nex-0b0015	1/2"	16	13	15	25	300
3811-nex-0b0020	1/2"	16	18	20	30	250
3811-nex-0b0025	1/2"	16	23	25	35	200
3811-nex-0b0030	1/2"	16	28	30	40	200
3811-nex-0b0035	1/2"	16	33	35	45	150
3811-nex-0b0040	1/2"	16	38	40	50	150
3811-nex-0b0050	1/2"	16	48	50	60	100



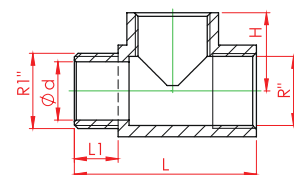
Half Cross

Code	R"	d	L1	H	Pcs.
3811-ned-0c0000	3/4"	20	11	42,8	75



Tap Connection- Holed

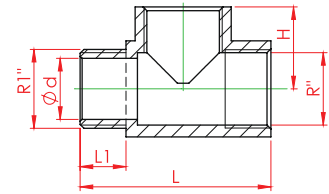
Code	R"	R1"	d	L1	L	H	Pcs.
3811-net-0b0000	1/2"	1/2"	8	12	50	21,5	100



General Brass Fittings

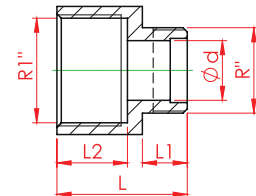
Tap Connection

Code	R"	R1"	d	L1	L	H	Pcs.
3811-bet-0c0000	3/4"	3/4"	20	12	50	21	80
3811-bel-0c0000	3/4"	3/4"	20	12	50	21	100



Tap Connection

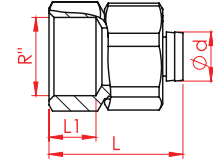
Code	R"	R1"	d	L2	L1	L	Pcs.
3811-neb-0c0000	1/2"	3/4"	14	16,5	10,5	30,5	200



General Brass Fittings

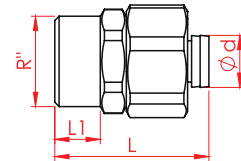
Mini Union

Code	R"	d	L1	L	Pcs.
3411-nff-160b01	1/2"	12	11,4	32,5	225



Male Return - Union

Code	R"	d	L1	L	Pcs.
3411-nmf-160b00	ø16 x 1/2"	12	10,5	35,5	225





+90 212 876 43 43



+90 212 876 76 49

Kalde Klima A.Ş. İstanbul / Türkiye

info@kaldeklima.com

www.kalde.com